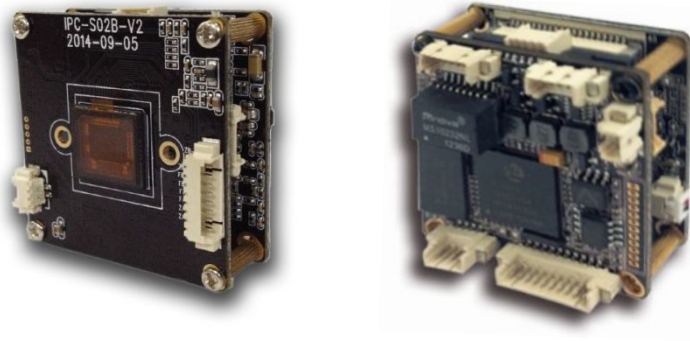


S322H16C-L26

2.0 megapixel Low-light 2 Boards IP Camera Module, Hi3516C + Sony IMX322 CMOS

1/2.8" 2.0 Megapixels Progressive Scan Sony IMX322 CMOS, Hisilicon Hi3516C Chipset, the highest resolution of 1920*1080, 0.1 Lux@F1.2 (color); 0.01 Lux@F1.2 (black and white); 38X38mm 2 boards ; RS485, Motorized lens, IR - CUT (day/night), adapt Bullet, Dome; H.264 video coding, double stream, ONVIF 2.4, be compatible many NVR and platform management software.



Features

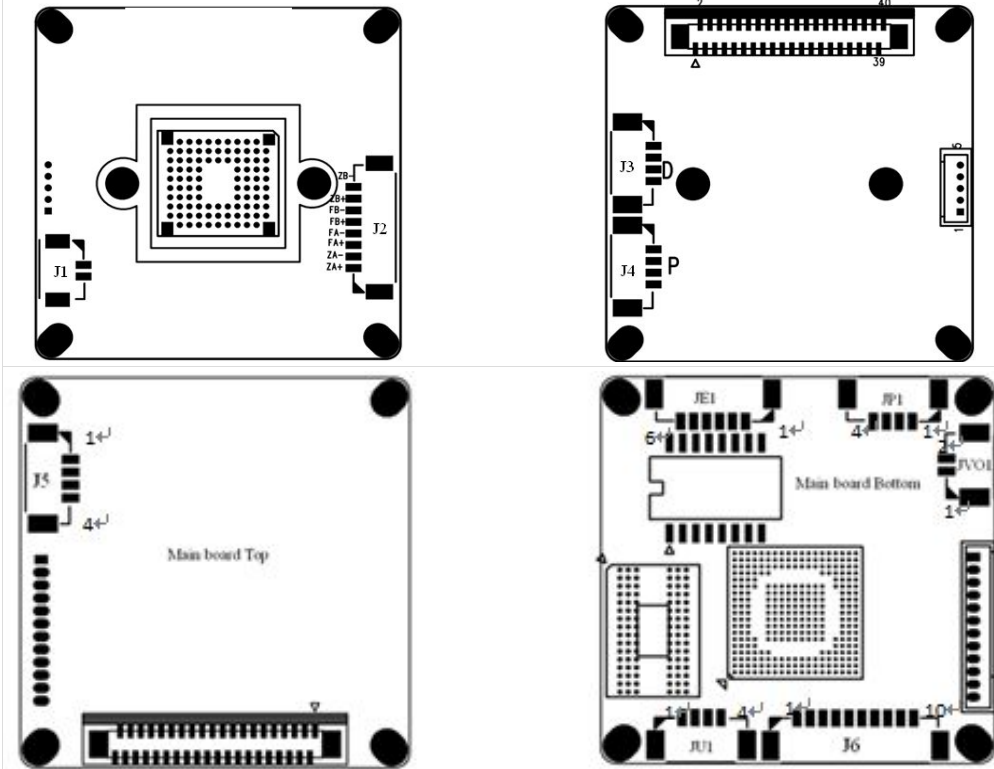
- > Hisilicon Hi3516C
- > 1/2.8" 2.0 Megapixels Progressive Scan Sony CMOS
- > Max 25/30fps@2.0 Megapixels (1920x1080, 1280x960, 1280x720)
- > H.264 & MJPEG dual-stream encoding
- > Adjustable digital WDR
- > 3D DNR
- > Privacy Mask, Motion Detection
- > Support ONVIF 2.4 protocol

Specifications

Model	S322H16C-L26
Camera	
Image Sensor	1/2.8" 2.0 megapixels Progressive Sony IMX322 CMOS
CPU	Hisilicon 3516C
Effective Pixels	1920(H)x1080(V)
Scanning System	Progressive
Electronic Shutter Speed	Auto (1/25 ~ 1/10000s)
Min. Illumination	0. 1Lux/F1.2 (Color), 0.01Lux/F1.2(B/W)
S/N Ratio	≥50db(AGC OFF)
Camera Features	
Day/Night	Auto(ICR)/Color/B/W
WDR	Digital WDR
White Balance	Auto
Gain Control	Auto
Noise Reduction	3D
Privacy Masking	Up to 4 areas

Video		
Compression	H.264/MJPEG	
Resolution	1080P(1920×1080)/720P(1280×720)/D1(704×576)/VGA(640*480)/QVGA(320×240)	
Frame Rate	Main Stream	1080P/720P(1 ~ 25/30fps)
	Sub Stream	D1/VGA/QVGA(1 ~ 25/30fps)
Bit Rate	32KB ~16Mbps, support VBR, CBR	
Text Overlay	Channel, Date & Time, Bit Rate	
Network		
Data Storage	Video record, Picture format	
Trigger	Manual, Automatic(motion detection, alarm, schedule, cycle)	
Alarm data transmission	FTP, E-mail, Browser, CMS	
Protocol	TCP/IP、UDP、RTP、RTSP、RTCP、HTTP、DNS、DDNS、DHCP、FTP、NTP、PPPOE、SMTP、UPNP	
ONVIF	ONVIF 2.4	
Max. User Access	10 users, IE, Google, Firefox	
Smart Phone	Windows Mobile, iPhone, iPad, Android	
Auxiliary Interface		
Audio in	Support	
Audio out	Support	
BNC Video out	Support	
RS422/RS485	Support	
USB	Support (32G USB flash)	
Alarm in	Support	
Alarm out	N/A	
IO Interface	Support	
General		
Power Supply	DC12V / PoE (802.3af)	
Power Consumption	<3W	
Working Environment	-20°C~+55°C , Less than 90% RH	
Dimensions	38 x 38 x 20mm	
Weight	0.15kg	

Connector



JP1 Power Supply Connector

1	DC12V
2	CMT_R
3	CMT_T
4	GND

JE1 Network Connector

1	RJ45_1
2	RJ45_2
3	RJ45_3
4	RJ45_6
5	Network Connected Light (Green light)
6	Network Status Light (Yellow light)

J1 IR-cut Connector

1	IR-CUT Control Signal 3.3V
2	IR-CUT Control Signal 3.3V

J2 Motorized Lens Connector(For AZ Series and lens YT2812FB.ICR-J-6)

1	Zoom A+
2	Zoom A-
3	Focus A+
4	Focus A-
5	Focus B+
6	Focus B-
7	Zoom B+
8	Zoom B-

J3 DC Auto-iris Connector

1	Drive -
2	Damp-
3	Damp+
4	Drive +
J4 P-Iris Connector	
1	IRIS A-
2	IRIS B+
3	IRIS A+
4	IRIS B-
J5 IR Light Board Connector	
1	IR Light Board Power Supply (12V)
2	GND
3	IR Feedback Signal Input (0.8V-12V)
4	IC PWM Control
JVO1 BNC Video out	
1	BNC Video out
2	GND
J6 Functions Connector	
1	Audio In (MIC/ Line)
2	GND (Audio)
3	Audio Out
4	GND
5	Reset
6	Alarm In
7	NULL
8	NULL
9	RS_485+
10	RS_485-
JU1	
1	GND
2	USB_DP
3	USB_DM
4	5V Power Supply